



**FACTORS INFLUENCING THE UTILIZATION OF REPRODUCTIVE
HEALTH SERVICES AMONG ADOLESCENTS WITH DISABILITIES:
A REVIEW**

Authors:

Putri Rhadiyah¹, Qorinah Estiningtyas Sakilah Adnani², Akhiat^{3*}

¹Magister of Midwifery, Faculty of Medicine Universitas Padjadjaran, Bandung, Indonesia

²Department of Public Health, Faculty of Medicine Universitas Padjadjaran, Bandung, Indonesia

^{3*}Poltekkes Kemenkes Pangkalpinang

Corresponding Email: *akhiatanasibrahim@gmail.com

About the Author

1. 1st Author : Putri Rhadiyah, SST
Affiliation : Magister Kebidanan, Fakultas Kedokteran, Universitas Padjadjaran
Poltekkes Kemenkes Pangkalpinang
Mailing address : Tanjung Bunga Cluster Lili, Pangkalpinang, Bangka Belitung
Email of author : p.rhadiyah@gmail.com
Orcid ID : 0000-0002-8157-9709
Google Scholar URL : <https://scholar.google.com/citations?user=Ds4QbJ4AAAAJ&hl=id&oi=ao>
Phone number : 085274835843
2. 2nd Author : Qorinah Estiningtyas Sakilah Adnani, SST, M. Keb, Ph.D
Affiliation : Departemen Ilmu Kesehatan Masyarakat, Fakultas Kedokteran, Universitas
Padjajaran, Bandung, Indonesia
Mailing address : Jl Eyckman no 38 Bandung
Email of author : qorinah.adnani@unpad.ac.id
Orcid ID : 0000-0002-4625-4861
Google Scholar URL : <https://scholar.google.com/citations?user=O3xcvicAAAAJ&hl=en&oi=ao>
Phone number : 0821-1227-1804
3. 3rd Author : Akhiat, SKM.,M.Si
Affiliation : Poltekkes Kemenkes Pangkalpinang
Mailing address : Jl Telaga Biru, Padang Baru Pangkalpinang
Email of author : akhiatanasibrahim@gmail.com
Orcid ID : 0009-0009-6966-4765
Google Scholar URL : <https://scholar.google.co.id/citations?user=AxlIbjsAAAAJ&hl=id>
Phone number : 081386458223

ABSTRACT

The global population of individuals with disabilities is approximately 1.3 billion people, constituting approximately 16% of the total world population. Individuals with disabilities are at a heightened risk of experiencing discrimination, including limited to restricted availability of healthcare services and instances of sexual violence. A limited proportion of adolescents with disabilities avail themselves of reproductive health information and education services due to their perception that such programs are inaccessible and lacking in inclusivity for individuals with disabilities. The objective of this scoping study is to examine the factors that impact the utilisation of reproductive health services among adolescents with disabilities. This article employs the PRISMA method to conduct a scoping review, aiming to identify articles published within the last five years (2019-2023) from various databases, including ProQuest, SAGE Journal, Science Direct, and Cochrane. The review yielded a total of seven relevant journals. The findings indicate that there is a low utilisation of reproductive health services among adolescents with disabilities. This can be attributed to several factors, such as limited knowledge, lack of partner support, inadequate media exposure, existing policies, and the negative perceptions held by adolescents with disabilities regarding the quality of reproductive health services available to individuals with disabilities.

Keywords: adolescent; disability; access; information; reproductive health

ABSTRAK

Penyandang disabilitas diperkirakan sebanyak 1,3 miliar orang atau sekitar 16 % populasi dunia. Penyandang disabilitas lebih rentan mengalami diskriminasi seperti keterbatasan akses terhadap pelayanan kesehatan bahkan mengalami kekerasan seksual. Hanya sebagian kecil remaja disabilitas yang memanfaatkan layanan informasi dan edukasi kesehatan reproduksi karena menganggap bahwa layanan kesehatan reproduksi tidak dapat diakses dan tidak ramah bagi penyandang disabilitas. scoping review ini bertujuan untuk mempelajari variabel yang mempengaruhi penggunaan layanan kesehatan reproduksi oleh remaja penyandang disabilitas. Scoping review dalam artikel ini menggunakan metode PRISMA untuk mengidentifikasi artikel yang terbit selama jangka waktu 5 tahun terakhir (2019-2023) melalui ProQuest, SAGE Journal, Science Direct, dan Cochrane serta menghasilkan 7 jurnal yang relevan. Hasil menunjukkan bahwa pemanfaatan layanan kesehatan reproduksi bagi remaja penyandang disabilitas masih rendah hal ini disebabkan oleh berbagai macam faktor diantaranya, pengetahuan, dukungan pasangan, paparan media, kebijakan dan persepsi remaja disabilitas itu sendiri tentang pelayanan kesehatan reproduksi yang buruk bagi penyandang disabilitas

Kata kunci: remaja; disabilitas; akses; informasi; kesehatan reproduksi

INTRODUCTION

Teenagers in Indonesia have restricted access to reproductive health information because many Indonesians still believe that discussing sexual and reproductive health matters is still frowned upon and should not be done so in public (Astuty et al., 2022). A youth's awareness of their reproductive health is influenced by the ease of information access. According to Dewan Perwakilan Rakyat RI (2023), the provision of health care is a fundamental right that applies to all individuals, including those with disabilities (Dewan Perwakilan Rakyat RI, 2023). A disability refers to an individual who encounters physical, intellectual, and/or sensory impairments that result in challenges when it comes to engaging in interactions and achieving complete participation (Kementrian Sekretariat Negara RI, 2016). According to the World Health Organization (2023), the global population comprises over 1.3 billion individuals, accounting for approximately 16% of the total population, who are identified as having disabilities (World Health Organization, 2023). According to the data provided by the Badan Pusat Statistik (2022), the total population of individuals with disabilities in Indonesia amounts to 933,000. Among this population, there are around 36,300 adolescents with impairments (Badan Pusat Statistik, 2022). Individuals with disabilities are at a heightened risk of experiencing discriminatory practices, including but not limited to restricted availability of healthcare services and instances of violence (WHO, 2021). In the year 2021, a total of 987 incidents of violence targeting children with disabilities were reported, with 764 cases involving female victims. Sexual violence has been identified as the form of violence that affects the largest number of individuals, as stated by Kemen PPPA in 2022 (Kemen PPPA, 2022). The occurrence of sexual violence in children often manifests in a number of concerning outcomes. Research suggests that children who experience victimization

are at an increased risk of perpetrating sexual violence themselves in the future. Additionally, they may exhibit mental health disorders, encounter challenges in communication, experience a diminished quality of life, and engage in dangerous health behaviors (WHO, 2023). Child sexual abuse can result in both physical and psychological consequences. Mental health issues have the potential to precipitate conditions such as depression, anxiety, and substance abuse involving alcohol or drugs. According to Gupta and Garg (2020), the long-term consequences of some behaviors might lead to the development of severe health conditions, including sexually transmitted illnesses and cancer (Gupta & Garg, 2020).

The incidence of discrimination against sexual and reproductive rights is particularly pronounced within the demographic of women who have impairments. Women who have disabilities are often perceived as lacking attractiveness and are sometimes desexualized. According to Murdjiana et al. (2019), individuals with disabilities are often depicted by society as lacking sexual desire and being incapable of assuming responsibility for pregnancy (Murdjiana et al., 2019). Individuals with disabilities exhibit similar levels of sexual activity as those without impairments, and they also possess comparable requirements for reproductive health services. Nevertheless, individuals frequently encounter challenges while attempting to avail themselves of reproductive health care. The findings of the study indicate that a limited proportion (8.4%) of adolescents with disabilities avail themselves of reproductive health information and education services due to their perception that such programs are not easily accessible and lack inclusivity for individuals with disabilities (Diribsa et al., 2022). The objective of this scholarly publication is to provide a comprehensive analysis of existing literature through a review, focusing on the various factors that influence the utilization of reproductive health care among adolescents with disabilities.

METODE

PRISMA (Preferred Reporting Items for Systematic Review and Meta-Analysis) compliance was followed in the systematic review process that resulted in the compilation of this paper. The objective of this review is to examine the factors that influence the utilization of reproductive health services among adolescents with disabilities in low-middle income countries. The primary objective of doing a systematic review is to gather pertinent material by utilizing electronic databases. The utilization of electronic databases such as ProQuest, SAGE Journal, Science Direct, and Cochrane has become increasingly prevalent in academic research. The search technique employs the keywords "Sexual and Reproductive Health Services" in conjunction with "adolescent disability" and "adolescents with disabilities". The analysis encompasses both primary research publications and literature review articles that have been published within the past five years (2019-2023) in both English and Indonesian languages. A total of 80 articles were acquired through an online search using electronic data. Subsequently, a comprehensive analysis is conducted on all acquired publications, resulting in the selection of seven articles that will serve as the foundational basis for the analysis presented in this work. The procedure of selecting articles is illustrated in Figure 1 (PRISMA chart).

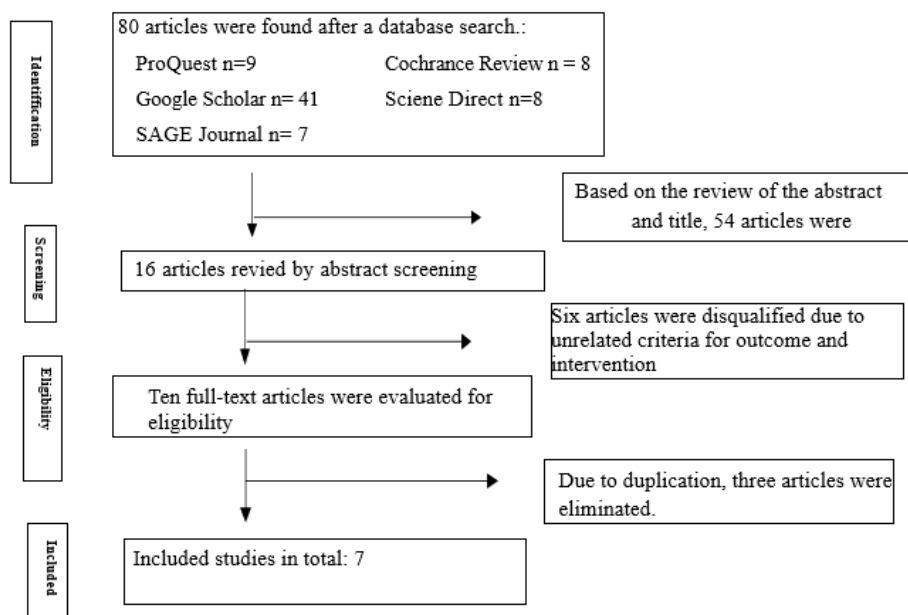


Figure 1: PRISMA Diagram

The characteristics of the article are explained in Table 1 below:

Table 1. Characteristics of the Articles Researched

No	Reference	Origin Journal	Design study	Objective Study	Sample	Variables and Instruments	Results	Conclusion
1	Pierre DeBeaudrap, Charle Moute, at all. 2019	International Journal of Environmental Research and Public Health 2019. 16, 417, doi:10.3390/ijerph16030417	Cross-sectional	In order to ascertain the socioeconomic ramifications associated with the availability of reproductive health services among individuals with disabilities	A total of 310 individuals within the age range of 15 to 49 years, who are afflicted with severe disabilities, were included in the study.	The independent variable of this study pertains to the socioeconomic factors that are associated with individuals who have disability. The dependent variable under consideration in this study is the level of access individuals have to reproductive health services. Research Tool: Questionnaire	The study discovered a noteworthy distinction in the use of reproductive health services between women who have had disabilities since childhood and those who have not. (20% vs 11%, p = 0.04). There is a lack of distinction between individuals with disabilities and those without impairments in terms of their utilization of HIV testing. Individuals with disabilities have challenges when it comes to accessing reproductive	The utilization of HIV testing and family planning is influenced by one's degree of education. Individuals with impairments have challenges while attempting to get reproductive health services.

							health care, as evidenced by an odds ratio (OR) of 1.81 and a 95% confidence interval (CI) of 1.06-3.08. These difficulties are often attributed to physical limits, with an OR of 9.47 and a 95% CI of 4.66-19.25.	
2	Yibeltal Mesfin. 2021	The Scientific World Journal; Cairo. 2021 DOI:10.1155/2021/5573687	Cross-sectional	The objective of this study is to evaluate the discrepancies in the utilization of sexual health and reproductive services, as well as associated factors, among teenagers in Southern Ethiopia, distinguishing between those with and without impairments.	A total of 422 teenagers participated in the study, with 211 of them having disabilities and the remaining 211 not having any difficulties.	Dependent Variable: Utilization of sexual and reproductive health services The independent variables in this study encompass sociodemographic parameters, including age category, marital status, religion, ethnicity, parental education status, parental occupation, and household income. Research Tool: Questionnaire	The proportion of adolescents with disabilities who access reproductive health care is 40.52%, whereas the corresponding figure for adolescents without disabilities is 69.1%.	The study revealed a general lack of utilization of reproductive health care among both disabled and non-disabled teenagers.
3	Bayew Kelkay Rade, et al. 2023	BioMed Central Women Health. 2023. P 1-11 https://doi.org/10.1186/s12905-023-02373-5	Cross Sectional	In order to ascertain the prevalence of sexual service utilization and reproductive health among women of reproductive age with	A total of 535 women who are of reproductive age and have impairments were included in the study.	The dependent variable under investigation is reproductive health services. The independent variable in this study pertains to the qualities exhibited by women with impairments.	Approximately 33.27% of women who have impairments avail themselves of reproductive health services on an annual basis.	The utilization of reproductive health services may experience an increase among those who have achieved an ideal family size and possess the ability to engage in

				disabilities, as well as to identify the characteristics associated with this population, a comprehensive investigation is warranted.		Research Tool: Questionnaire		open discussions regarding reproductive health matters.
4	Sampurna_Kakchapati; et all 2022	Dialogues in Health, Volume 1, 2022, 100068, ISSN 2772-6533, https://doi.org/10.1016/j.dialog.2022.100068 .	Cross sectional	In order to ascertain the correlation between social determinants and disability status, as well as the utilization of reproductive health services among women with disabilities in Nepal, a comprehensive investigation is required.	There were 13,320 non-disabled women and 290 disabled women.	The dependent variables under consideration in this study encompass attitudes towards domestic violence, utilization of family planning, and knowledge pertaining to HIV/AIDS. The independent variable of this study pertains to the many characteristics exhibited by women with impairments.	The proportion of women with disabilities who lack education is 52.1%, whereas for non-disabled women it is 30.3%. Similarly, in terms of economic status, 32.8% of women with disabilities are in a low-income compared to 23.3% of non-disabled women. Additionally, a greater proportion of women with disabilities, 23.4%, have a history of smoking compared to 8.2% of non-disabled women.	A significant discovery within the scope of this study pertains to the disadvantaged socioeconomic situation, heightened engagement in high-risk behaviors, and limited accessibility to sexual and reproductive health care experienced by women with disabilities.
5	Tujuba Diribsa, et all. 2022	International Journal of Reproductive Medicine . Volume 2022, Article ID 5945921, 9 pages.	Cross sectional	The objective of this study is to evaluate the factors influencing the utilization of reproductive health services	A total of 454 individuals who are classified as youth with disabilities.	The dependent variable under investigation is reproductive health service. The independent variables under consideration in this study encompass	The proportion of teenagers with impairments who seek reproductive screening at healthcare facilities is merely 17.2%. Two adolescents with impairments	Teens with disabilities continue to use sexual and reproductive health care infrequently. The utilization of reproductive health services is

		https://doi.org/10.1155/2022/5945921		among adolescents with disabilities in Ethiopia.		sociodemographic factors, disability factors, individual characteristics, and health care facility factors. Research Instrument: Questionnaire	have experienced sexual assault. The utilization of services is found to be twice as common among adolescent boys with disabilities compared to adolescent girls with impairments (adjusted odds ratio [AOR] = 2.32, 95% confidence interval [CI]: 1.18-4.57).	influenced by various factors, including the presence of physical diseases, engagement in sexual intercourse, possession of adequate knowledge, and the cultivation of positive attitudes.
6	Virpi Mesiäislehto, et al 2021	International Journal of Environmental Research and Public Health. 2021, 18, 1657. https://doi.org/10.3390/ijerph18041657	Qualitative	In order to ascertain the manner in which reproductive health services cater to the needs of adolescents with impairments, further investigation is required.	A total of 136 female individuals that possess impairments.	The factors pertaining to service providers are ease of access, acceptability, availability and accommodation, affordability, and suitability. Dimensions of service users: Cognitive capacity, information retrieval skills, accessibility, financial capability, and active involvement. Research Instrument: Interview Guidelines	Based on the feedback provided by participants, it has been observed that reproductive health services exhibit inadequate responsiveness towards the unique attributes of adolescent girls with disabilities in relation to Approach, Acceptability, Availability, Accommodation, Affordability, and Suitability. The service provider's attributes have a negative impact on the service users' ability to access the service.	The findings indicated that prejudice has an impact on the accessibility of services during different stages of seeking assistance for teenagers with impairments.
7	Heri Puspito, et al. 2019	Jurnal Kesehatan masyarakat. 2019	Qualitative	In order to ascertain the obstacles impeding the effective implementation	The study involved a sample of 18 informants comprising individuals from diverse	The academic discourse encompasses the domains of communication, resources, organization, interpretation,	The realization of the rights of individuals with disabilities is not contingent upon Regional Regulation No.11 of 2015,	The communication between regional devices has not been effectively executed.

				ation of Perda Bantul no. 11 of 2015, which pertains to the fulfillment of reproductive health rights for adolescents with disabilities, a comprehensive analysis is necessary.	backgrounds, including policy officials.	and interactions between organizations.	which pertains to the fulfillment of the rights of individuals with disabilities specifically in Bantul Regency. Instead, it is contingent upon programs implemented by both the central and local government	The current availability of human resources and physical facilities is inadequate for effectively addressing the needs of adolescents with disabilities within educational institutions and the broader society. Furthermore, there exists a limited level of authority in the execution of reproductive health rights for this specific demographic.
--	--	--	--	---	--	---	---	---

RESULT AND DISCUSSION

Eighty articles in all were obtained using the specified keywords. Subsequent searches led to the selection of 7 papers for analysis in this literature review. The publications under analysis include those that have been published within the past five years (2019 to 2023) and are sourced from internet databases such as ProQuest, SAGE Journal, Science Direct, and Cochrane. This research inquiry focuses on the determinants influencing the utilization of reproductive health care among adolescents with disabilities. To address this issue, a comprehensive review of the literature was conducted, resulting in the identification of five papers utilizing quantitative methodologies and two studies employing qualitative approaches.

Table 1 presents an overview of the studied papers, highlighting their key characteristics such as research design, objectives, samples, variables, instruments, as well as the findings and conclusions derived from the conducted research. According to the data shown in Table 1, it is evident that adolescents with disabilities continue to encounter challenges in obtaining adequate healthcare, particularly in relation to reproductive health services. Adolescents with disabilities have the same rights regarding their sexual and reproductive health as those without disabilities. (Hameed et al., 2020). Adolescents with disabilities may encounter obstacles while attempting to get reproductive health care, which may consequently expose them to many perilous behaviors, including but not limited to sexual abuse, unintended pregnancies, HIV/AIDS, and substance addiction (Hermawan, 2020). Several factors are taken into consideration when examining the impact on the accessibility of reproductive health care for adolescents with impairments, which include:

1. Education

Education plays a key role in shaping an individual's behavior within society, enabling them to exhibit exemplary conduct and make informed and prudent choices and judgments. The significance of selecting health goods and services becomes increasingly pronounced as an individual's educational attainment rises. Individuals who possess a limited level of formal education are more susceptible to external influences and have a tendency towards inconsistency in their decision-making processes. The decision to utilize health services can be influenced by an individual's degree of education, as it has been seen that educational attainment can impact one's cognitive processes, including both rational and irrational thinking, in comparison to individuals with greater levels of education. There exists a positive correlation between higher levels of education and improved self-reported health, reduced morbidity and death rates, as well as decreased disability. In contrast, individuals with lower levels of education tend to report poorer health, exhibit a shorter lifespan, and experience reduced survival rates when faced with illnesses. Education plays a pivotal role in fostering and sustaining wholesome lives and constructive mindsets, hence fostering social connections and enhancing the overall welfare of young individuals (Raghupathi & Raghupathi, 2020). Parents of children with impairments often experience feelings of guilt, leading them to seclude their children within their homes. Consequently, these children are deprived of access to proper education, thereby impeding their ability to acquire essential knowledge regarding reproductive health. A study conducted in Cameroon in 2019 revealed that individuals who have had disabilities since childhood, regardless of gender, exhibit lower levels of educational achievement. Consequently, their access to suitable employment opportunities is limited, thereby increasing their vulnerability to poverty. Individuals who have experienced difficulties since childhood sometimes exhibit poorer levels of scholastic achievement and encounter barriers in accessing reproductive health services and employment-related information. (DeBeaudrap et al., 2019).

2. Knowledge

The concept of knowledge is a fundamental aspect of academic discourse. It encompasses the understanding and awareness of information, facts, and ideas. The study's conclusions showed a statistically significant correlation between teens' use of reproductive health services and their discussions about reproductive health. Health education has a significant influence on increasing knowledge. The benefits of health education are to increase adolescents' knowledge so that there are changes in better health attitudes. Basically, health education is an effort to deliver health messages to adolescents, or individuals to gain knowledge about better health. (Widiawati & Merdekawati, 2023). Adolescents' limited understanding of reproductive health might be attributed to societal stigmatization and inadequate information in this domain, rendering them susceptible to reproductive health challenges (Baigry et al., 2023). The primary determinants of health services utilization were knowledge and perception of health services (Pramana et al., 2022). Parents often perceive individuals with impairments as a source of shame or misfortune, leading to limitations on their inclusion within the broader society. These perspectives create significant barriers to accessing information pertaining to sexual and reproductive health rights, resulting in limited knowledge among parents on these rights (Murdjiana et al., 2019). According to Diribsa et al. (2022), individuals with disabilities who possess a higher level of knowledge are more inclined to make use of reproductive health services compared to those with a lower level of knowledge (Diribsa et al., 2022). Engaging in conversations about reproductive health among adolescents fosters an enhanced understanding of available reproductive health services and serves as a catalyst for their inclination to utilize such services. Knowledge is acquired through a multitude of channels, encompassing mass media, electronic media, user manuals, health professionals, and visual aids, among others. Insufficient understanding among adolescents on reproductive health and the availability of related services can have detrimental consequences for this demographic group. Commonly observed consequences on reproductive health encompass undesired pregnancies, sexually transmitted illnesses, and instances of sexual violence. Furthermore, engaging in conversations regarding reproductive health matters with various peers not only facilitates the exchange of information and behaviors among teenagers, but also aids in their comprehension and

utilization of available services. According to the study conducted by Mesiäislehto et al. (2021), According to a study conducted in Ghana in 2020, the utilization of women's reproductive health services is significantly influenced by autonomy, irrespective of educational attainment and various other criteria associated with women's societal standing (Thapa NR, 2020).

3. The Concept of Spousal Support

The child and the family form an essential unit and aid one another with their education (Puspitarini et al., 2023). The family unit holds significant value within the social context, since it serves as a crucial source of support for individuals with disabilities. The family unit serves as the primary and most immediate context that offers inherent assistance to children with impairments. The support provided by the family is directly associated with the attitudes and behaviors exhibited by each member of the family. Adolescents with impairments are likely to exhibit increased motivation towards accessing reproductive health care when they get substantial support from their familial or environmental contexts. Family support is a multifaceted concept encompassing various dimensions of familial attitudes and actions directed towards family members. These dimensions include informational support, evaluation support, instrumental support, and emotional support. The provision of familial and environmental support has the potential to mitigate the susceptibility to depression in those with impairments. There is a higher utilization of health care among women with disabilities who cohabit with their partners compared to those who do not reside with their parents. Consistent with prior research, individuals with disabilities who cohabit with their partners are likely to exhibit increased openness and willingness to engage in conversations pertaining to reproductive health matters. One of the exogenous elements that exert influence on endeavors to attain access to reproductive health services. The provision of positive support from one's partner can serve as a catalyst for enhancing motivation to utilize reproductive health treatments (Rade et al., 2023).(Slaughter-Acey & M., 2021).

4. Media display

The study focused on women with disabilities who were of reproductive age and had been exposed to certain factors. Individuals who engaged with electronic media, such as radio or television, on a regular basis had a 5.9-fold increase in the likelihood of utilizing at least one reproductive health service, in comparison to those who did not access electronic media. Based on the results of Nofita in 2022 the highest media source affecting the behavior of teenage courtship is television, meaning that many teenagers use their free time to watch television, plus a lot of television touts that expose (Nofita et al., 2022). The media has a significant role in society since it possesses the ability to effectively disseminate information to a broader audience, hence shaping individual perspectives and fostering increased consciousness (Permatasari et al., 2023). According to the research conducted in Nepal in 2022, it has been observed that women with impairments exhibit lower levels of media utilization, resulting in a diminished ability to acquire information pertaining to reproductive health (Kakchapati et al., 2022). Consistent with previous research indicating a low prevalence of social media usage among individuals with disabilities, this can be attributed to the limited availability of disability-friendly media, which consequently restricts their access to reproductive health information (Caton & Chapman, 2016). The inclination to obtain information is intricately linked to the acquisition of knowledge. The findings indicate that students who did not seek reproductive health information through both online and offline sources exhibited a comparatively lower level of knowledge in comparison to students who actively sought out such information (I,Arifah.,I, 2020). When delivering reproductive and sexual health education to adolescents with disabilities, it is important to recognize that their needs and capacities differ from those of non-disabled adolescents. Therefore, it is necessary to utilize specialized learning materials that may cater to the diverse constraints experienced by adolescents with disabilities. According to Anaemejeh et al. (2022), the findings of the meta-analysis indicate that the utilization of animated videos has been demonstrated to enhance the knowledge of adolescents and serves as an efficacious medium for imparting crucial information pertaining to reproductive and sexual health. This, in turn, contributes to the reduction of

adolescents' susceptibility to sexual abuse and sexually transmitted infections, while also enhancing their reproductive health (Anaemejeh et al., 2022). According to a study conducted by Brayboy et al. (2018), findings indicate that the utilization of digital health technology in sexual health education for minority adolescent girls in the United States offers enhanced accessibility and implementation compared to traditional methods. Moreover, the study suggests that digital health technology has a greater influence on this demographic (Brayboy et al., 2018). The provision of adequate training on sexual and reproductive health education for adolescents with disabilities is of utmost importance for primary healthcare practitioners, including obstetricians and midwives. This is due to the necessity of employing distinct methodologies to accommodate the diverse constraints experienced by adolescents with disabilities, hence ensuring optimal comprehension and assimilation of knowledge by this population. It is imperative to consider the perspectives and lived experiences of individuals with disabilities when designing reproductive health intervention services, including educational and training initiatives. Moreover, it is crucial to employ language that is unambiguous, succinct, and well-organized. During the current era of digital transformation, teenagers with disabilities have the opportunity to utilize technological breakthroughs and readily available information to enhance their understanding of sexual and reproductive health. The comprehension of sexuality and physical closeness can be augmented by the utilization of models, animations, and visual representations (Singh Shrestha et al., 2022).

5. Policy maker coordination

The process of coordinating the efforts of the people or organizations in charge of creating and carrying out policies is known as "policy maker coordination." It involves collaboration, communication, and cooperation among policy makers to ensure consistency. The health system can be characterized as a multifaceted system with several components and interdependent stakeholders, necessitating efficient coordination to enhance the achievement of health system objectives. The efficacy of a policy is contingent upon its implementation. Implementation refers to the process of providing the necessary resources and mechanisms to effectively execute a program, in this specific context, focusing on the delivery of reproductive health care for adolescents with disabilities. Nevertheless, empirical evidence from Yogyakarta suggests that the impediments to the realization of reproductive rights among adolescents with disabilities can be attributed to the inequitable availability of reproductive health services. The study findings indicate that both Puskesmas and the Health Office primarily prioritize the healthcare needs of typical teenagers. Additionally, social services concentrate on providing free health insurance and meeting the social welfare requirements of individuals with impairments. The local governments have not effectively implemented measures aimed at promoting and preventing reproductive health among adolescents with impairments. Health personnel in SLB implement activities such as counseling and sex education. The health component of the policy lacks specificity, as it does not include any paragraphs pertaining to reproductive health and the promotion of preventive initiatives, as mandated by the Disability Convention Law. The effective realization of reproductive rights for adolescents with disabilities has been hindered by suboptimal communication and socialization among regional and cross-sectoral entities. The establishment of effective coordination and collaboration among organizations plays a crucial role in ensuring the successful implementation of policy programs. This factor significantly influences the extent to which programs may be executed in alignment with their intended aims and within the desired timeframe. The significance of socialization lies in its role as a mechanism for disseminating information pertaining to the implementation of policies to Regional Apparatus Organizations (Puspito et al., 2019).

LIMITATION OF THE STUDY

There is a scarcity of research investigating the various determinants influencing the provision of reproductive health services to adolescents with disabilities. Specifically, there is a dearth of studies

exploring this topic from the standpoint of family members, health care professionals, and health workers. Consequently, the existing literature predominantly reflects the perspectives of individuals with disabilities themselves.

CONCLUSION AND SUGGESTION

The utilization of reproductive health services among adolescents with disabilities remains limited, primarily influenced by factors such as knowledge, partner support, media exposure, policies, and the perceptions held by adolescents with disabilities regarding inadequate reproductive health services for individuals with disabilities. In order to effectively cater to the reproductive health needs of adolescents with disabilities, it is imperative to enhance awareness, engage adolescents with disabilities in the planning of services, and guarantee accessibility and customization of reproductive health services to align with their specific need. The provision of comprehensive sexual education and the training of healthcare professionals are essential components in guaranteeing equitable access to high-quality reproductive health services for adolescents with disabilities. Furthermore, it is imperative to establish collaborative alliances with professional associations, academic institutions, or other relevant stakeholders to facilitate the execution of reproductive health programs for individuals with disabilities. It is anticipated that affiliated entities will furnish instructional materials pertaining to reproductive health components that are inclusive of individuals with disabilities.

ETHICAL CONSIDERATION

Funding Statement

No organization provided the authors with support for the work they submitted.

Conflict of Interest Statement

There was no conflict of interest when this article was being prepared.

REFERENCES

- Anaemejeh, N., Bachmann, G., Hutchinson-Colas, J., & Alshowaikh, K. (2022). Sexual Health Education- Using Animated Videos to Teach Teenagers and Young Adults. *The Journal of Sexual Medicine*, 19(8, Supplement 3), S23. <https://doi.org/https://doi.org/10.1016/j.jsxm.2022.05.050>
- Astuty, D. A., Mardianto, M., & S, I. (2022). Reproductive Health Education Based On Cognitive Psychology Approach. *Jurnal Aisyah: Jurnal Ilmu Kesehatan*, 8(1), 77–84. <https://doi.org/10.30604/jika.v8i1.1458>
- Badan Pusat Statistik. (2022). *Jumlah Penduduk Berumur 5 Tahun ke Atas yang Mengalami Kesulitan Mengurus Diri Sendiri*. <https://sensus.bps.go.id/topik/tabular/sp2022/153/0/0>
- Baigry, M. I., Ray, R., Lindsay, D., Kelly-Hanku, A., & Redman-MacLaren, M. (2023). Barriers and enablers to young people accessing sexual and reproductive health services in Pacific Island Countries and Territories: A scoping review. *PloS One*, 18(1), e0280667. <https://doi.org/10.1371/journal.pone.0280667>
- Brayboy, L. M., McCoy, K., Thamocharan, S., Zhu, E., Gil, G., & Houck, C. (2018). The use of technology in the sexual health education especially among minority adolescent girls in the United States. *Current Opinion in Obstetrics and Gynecology*, 30(5), 305–309. <https://doi.org/10.1097/GCO.0000000000000485>
- Caton, S., & Chapman, M. (2016). The use of social media and people with intellectual disability: A systematic review and thematic analysis. *Journal of Intellectual & Developmental Disability*, 41(2), 125–139. <https://doi.org/10.3109/13668250.2016.1153052>
- DeBeaudrap, P., Mouté, C., Pasquier, E., Mac-Seing, M., Mukangwije, P. U., & Beninguisse, G. (2019). Disability and access to sexual and reproductive health services in Cameroon: A

- mediation analysis of the role of socioeconomic factors. *International Journal of Environmental Research and Public Health*, 16(3), 4–10. <https://doi.org/10.3390/ijerph16030417>
- Dewan Perwakilan Rakyat RI. (2023). Undang-Undang Republik Indonesia Nomor 17 Tahun 2023 Tentang Kesehatan. *Undang-Undang*, 187315, 1–300.
- Diribsa, T., Wakjira, D., Atomsa, G., Mekoya, T., Mamo, F., Fekecha, B., Ebisa, M., & Teferi, G. (2022). Determinant Factors of Sexual and Reproductive Health Service Utilization among In-School Adolescents with Disability in Jimma Zone, Southwest Ethiopia. *International Journal of Reproductive Medicine*, 2022, 1–9. <https://doi.org/10.1155/2022/5945921>
- Gupta, S., & Garg, D. (2020). Causes and Effects of Child Sexual Abuse. *International Journal of Innovative Science and Research Technology*, 5, 1867–1870. <https://doi.org/10.38124/IJISRT20MAY650>
- Hameed, S., Maddams, A., Lowe, H., Davies, L., Khosla, R., & Shakespeare, T. (2020). From words to actions: Systematic review of interventions to promote sexual and reproductive health of persons with disabilities in low- And middle-income countries. *BMJ Global Health*, 5(10). <https://doi.org/10.1136/bmjgh-2020-002903>
- Hermawan, B. (2020). Modul Guru: Pendidikan Kesehatan Reproduksi dan Seksualitas bagi Remaja dengan Disabilitas Intelektual. In *Kemendikbud*. <https://pmpk.kemdikbud.go.id/bukudigital/products/...%0A>
- I, Arifah., I, M. (2020). Faktor yang Berhubungan dengan Akses Informasi Kesehatan Reproduksi Daring Pada Mahasiswa. *Indonesian Journal of Health Community*, 1(1), 11–20.
- Kakchapati, S., KC, S. P., Giri, S., Bhattarai, S., & Baral, S. C. (2022). Factors associated with access to sexual and reproductive health services among women with disabilities in Nepal. *Dialogues in Health*, 1(July), 100068. <https://doi.org/10.1016/j.dialog.2022.100068>
- Kemen PPPA. (2022). *Perempuan dan Anak Penyandang Disabilitas alami kerentanan berlapis*. <https://www.kemenpppa.go.id/index.php/page/read/29/3695/kemenpppa-perempuan-dan-anak-penyandang-disabilitas-alami-kerentanan-berlapis>
- Kementerian Sekretariat Negara RI. (2016). *UU RI No. 8 Tahun 2016*. 243, 1–5.
- Murdjiana, D., Hodijah, S. N., Mukarramah, E., Prawitasari, S. A., Prameswari, D., & Sugiri, R. N. (2019). *Risalah Kebijakan: Perempuan Dengan Disabilitas. Apakah Kami Aseksual?* <https://komnasperempuan.go.id/download-file/419>
- Nofita, R., Siallagan, D., Octasila, R., & Nugraha, R. D. G. (2022). Determinant Teenager Family Planning in Banten Province 2019 (SKAP 2019 Secondary Analysis Data). *Jurnal Aisyah : Jurnal Ilmu Kesehatan*, 7(2), 605–614. <https://doi.org/10.30604/jika.v7i2.607>
- Permatasari, A. A., Lolita, D. C., & Chotimah, C. C. (2023). Peran Media Digital Dalam Upaya Promosi Kesehatan Untuk Meningkatkan Kesehatan Masyarakat : Tinjauan Literatur. *Jurnal Zaitun Jurnal Ilmu Kesehatan*, 10(2), 1–4.
- Pramana, L. D. Y., Suryoputro, A., & Purnami, C. T. (2022). Factors Affecting Outpatients Intention to Revisit Health Services at Public Health Center in Demak District. *Jurnal Aisyah : Jurnal Ilmu Kesehatan*, 7(2), 631–638. <https://doi.org/10.30604/jika.v7i2.1049>
- Puspitarini, N. A., Kumboyono, K., & Hayati, Y. S. (2023). Factors Influencing Family Support for Education Patterns in School-Age Children. *Jurnal Aisyah : Jurnal Ilmu Kesehatan*, 8(1), 207–220. <https://doi.org/10.30604/jika.v8i1.1554>
- Puspito, H., Purnaweni, H., & Nugraheni, S. A. (2019). Faktor Penghambat Pemenuhan Hak Kesehatan Reproduksi Penyandang Disabilitas (Studi Pada Remaja Smp Di Slb Negeri Bantul Yogyakarta). *Jurnal Kesehatan Masyarakat*, 18(2), 175–189.
- Rade, B. K., Tamiru, A. T., Aynalem, G. L., Taye, E. B., Melkie, M., Abera, A., Cherkos, E. A., & Asaye, M. M. (2023). Prevalence and factors associated with sexual and reproductive health services use among reproductive age women with disabilities: a community based cross-sectional study. *BMC Women's Health*, 23(1), 1–12. <https://doi.org/10.1186/s12905-023-02373-5>
- Raghupathi, V., & Raghupathi, W. (2020). The influence of education on health: an empirical assessment of OECD countries for the period 1995–2015. *Archives of Public Health*, 78(1), 20.

<https://doi.org/10.1186/s13690-020-00402-5>

- Singh Shrestha, P., Ishak, A., Maskey, U., Neupane, P., Sarwar, S., Desai, S., Naffa, F., Cuevas Lou, C. M., & Diaz-Miret, M. (2022). Challenges in Providing Reproductive and Gynecologic Care to Women with Intellectual Disabilities: A Review of Existing Literature. *Journal of Family & Reproductive Health*, 16(1), 9–15. <https://doi.org/10.18502/jfrh.v16i1.8589>
- Slaughter-Acey, H.-J. W. A. I. A.-O. N., & M., J. M. (2021). Preconception Health Risks among U.S. women: disparities at the intersection of disability and race or ethnicity. *Womens Health Issues*, 31(1), 65–74.
- WHO. (2021). *Global report on health equity for persons with disabilities*. <https://www.who.int/publications/i/item/9789240063600>
- WHO. (2023). *Sexual Violence*. <https://apps.who.int/violence-info/sexual-violence/>
- Widiawati, S., & Merdekawati, D. (2023). The Influence of Health Education on Female Knowledge about Vulva Hygiene. *Jurnal Aisyah: Jurnal Ilmu Kesehatan*, 8(2), 247–252. <https://doi.org/10.30604/jika.v8i2.1804>
- World Health Organization. (2023). *Disability*. <https://www.who.int/news-room/fact-sheets/detail/disability-and-health>